



RESTRICTED INFORMATION - Not to be released outside the General Accounting Office
Account of specific activities
By the

RELEASED

UNITED STATES GENERAL ACCOUNTING OFFICE
WASHINGTON, D.C. 20548

~~17009~~
man
114111

LOGISTICS AND COMMUNICATIONS
DIVISION



114111

B-198715

SEPTEMBER 11, 1980

The Honorable Gary W. Hart
Chairman, Subcommittee on Military
Construction and Stockpiles
Committee on Armed Services
United States Senate

SEN 0512 R

Dear Mr. Chairman:

Subject: Changes in DOD's Base Structure
From 1957 to 1978 (LCD-80-104)

Your March 1, 1979, letter asked us to provide you with broad statistics and trends on the military base structure. Specifically, you requested information on (1) the number of military bases in the structure from 1950 to the present, categorized by military service, size, and location (within the United States versus overseas) and (2) changes over time by service as to personnel, dollars appropriated, and geographical location.

We have summarized, from a variety of Department of Defense (DOD) sources, data on each of the points of interest, primarily from 1957 to 1978. Data before 1957 was not available and data for 1979 is not yet available. We did not attempt to verify the accuracy of the data because of the time required to check the voluminous amount of supporting records.

In October 1979 and in April 1980, we briefed your staff on much of the information developed in response to your request. As agreed, this report summarizes the information developed.

CHANGES IN NUMBER OF
MILITARY INSTALLATIONS

To show changes in the number of military installations since 1957, we limited our statistics to those installations employing 285 or more civilian personnel. The Congress has identified an installation whose closure or realignment must be justified under 10 U.S.C. 2687 as one authorized to employ not less than 300 civilian personnel. We used 285 employees

512004

*AGC 02005
AGC 00020
AGC 02001
AGC 02007 (945372)*

as our criterion to allow a 5-percent difference, because the data furnished by DOD showed actual personnel and not authorized.

Our statistics were derived from DOD summary data, which identified, by location, most military installations (certain categories of installations are lumped as one figure in DOD's data) and the number of civilians employed at each installation. Such data is available for installations in the United States from 1957 through 1978. For military installations overseas, such data is available from 1957 through 1974. Since 1974, the services reported the number of civilian and military personnel overseas by country rather than by installation.

Changes in number of
domestic military installations

In 1957 there were 396 domestic military installations which employed 285 or more civilians. The number of such installations, which we refer to as major installations, decreased to 287 in 1978, which is a 27.5-percent decrease. ^{1/}The changes in the number of major installations are summarized in the following chart and shown graphically in enclosure I.

<u>Military service</u>	<u>Major installations 1957</u>	<u>Major installations 1978</u>	<u>Decrease</u>	<u>Percent of decrease</u>
Army	133	84	49	36.8
Navy/Marine Corps	135	108	27	20.0
Air Force	<u>128</u>	<u>95</u>	<u>33</u>	25.8
Total	<u>396</u>	<u>287</u>	<u>109</u>	27.5

Changes in number of
overseas military installations

In 1957 there were 222 U.S. military installations overseas. This number decreased to 111 in 1974, which is a 50-percent decrease. The changes in the number of overseas installations are summarized in the following chart and shown graphically in enclosure II.

^{1/}Summary data on the reduction in total installations, regardless of size, was not available.

<u>Military service</u>	<u>Overseas installations 1957</u>	<u>Overseas installations 1974</u>	<u>Decrease</u>	<u>Percent of decrease</u>
Army	127	56	71	55.9
Navy/Marine Corps	29	29	-	-
Air Force	<u>66</u>	<u>26</u>	<u>40</u>	60.6
Total	<u>222</u>	<u>111</u>	<u>111</u>	50.0

CHANGES IN NUMBER OF CIVILIAN EMPLOYEES AT DOMESTIC MILITARY INSTALLATIONS

In 1957 there were 820,422 civilians employed at the 396 domestic military installations. The number of civilians decreased to 611,941 (25.4 percent) in 1978 at the remaining 287 installations. ^{1/} The changes in the number of civilian employees at major installations are broken down in the table below and shown graphically in enclosure III.

<u>Military service</u>	<u>Civilian employees 1957</u>	<u>Civilian employees 1978</u>	<u>Decrease</u>	<u>Percent of decrease</u>
Army	258,666	199,672	58,994	22.8
Navy/Marine Corps	293,727	222,517	71,210	24.2
Air Force	<u>268,029</u>	<u>189,752</u>	<u>78,277</u>	29.2
Total	<u>820,422</u>	<u>611,941</u>	<u>208,481</u>	25.4

Additional information on the average number of civilian employees per domestic major installation and the ranges of the number of civilian employees per installation is shown in the following table:

^{1/}The total number of DOD civilian employees in the United States was about 1,023,000 in 1957 and about 895,000 in 1978. The total number of DOD civilian employees worldwide was about 1,159,000 in 1957 and 903,000 in 1978.

<u>Military service</u>	<u>No. of installations</u>	<u>Average No. of employees</u>	<u>Range in No. of employees</u>
-------------------------	-----------------------------	---------------------------------	----------------------------------

1957:

Army	133	1,945	329 - 9,840
Navy/Marine Corps	135	2,176	287 - 15,863
Air Force	128	2,094	286 - 22,471

1978:

Army	84	2,377	309 - 13,102
Navy/Marine Corps	108	2,060	286 - 11,997
Air Force	95	1,997	292 - 16,495

CHANGES IN NUMBER OF MILITARY PERSONNEL WORLDWIDE

In 1957 there were about 2,796,000 military personnel worldwide. The number of military personnel decreased to about 2,062,000, or 26 percent, in 1978. The changes in the number of military personnel by service are shown below.

<u>Military service</u>	<u>Military personnel 1957</u>	<u>Military personnel 1978</u>	<u>Decrease</u>	<u>Percent of decrease</u>
Army	997,994	771,624	226,370	22.7
Navy/Marine Corps	877,969	721,068	156,901	17.9
Air Force	919,835	569,712	350,123	38.1
Total	<u>2,795,798</u>	<u>2,062,404</u>	<u>733,394</u>	26.2

CHANGES IN NUMBER OF ACRES MANAGED
BY DOMESTIC MILITARY INSTALLATIONS

In 1957 the 396 major military installations in the United States managed about 11 million acres of land. Although the number of major installations decreased to 287 in 1978, the number of acres managed by these installations increased to 13.5 million acres, or an increase of 22.6 percent.

The changes in the number of acres for the military services are shown in the table below and graphically in enclosure IV.

<u>Military service</u>	<u>Acres 1957</u>	<u>Acres 1978</u>	<u>Increase or decrease(-)</u>	<u>Percent of increase or decrease(-)</u>
Army	6,017,000	9,049,000	3,032,000	50.4
Navy/Marine Corps	3,555,000	3,038,000	-517,000	-14.5
Air Force	<u>1,446,000</u>	<u>1,417,000</u>	<u>-29,000</u>	-2.0
Total	<u>11,018,000</u>	<u>13,504,000</u>	<u>2,486,000</u>	22.6

Additional information on the average number of acres of land per domestic major installation and the ranges of the number of acres per installation is shown in the following table.

<u>Military service</u>	<u>No. of installations</u>	<u>Average No. of acres</u>	<u>Range in No. of acres</u>
1957:			
Army	133	45,240	4 - 798,068
Navy/Marine Corps	135	26,335	9 - 1,207,406
Air Force	128	11,300	36 - 465,909
1978:			
Army	84	107,725	48 - 1,755,883
Navy/Marine Corps	108	28,130	12 - 1,105,927
Air Force	95	14,915	11 - 460,562

From 1960 to 1961, the Army had a total increase of 1.7 million acres. Alaska, as a new State, reported two installations in 1960 and a third in 1961, which accounted for 1.3 million acres. Dugway Proving Grounds, Utah, accounted for the other 400,000 acres. There was another increase in the Army acreage during 1963 and 1964 due to a 2.2 million acre increase at the White Sands Proving Grounds, New Mexico, which also lost about 1 million acres during 1966.

CHANGES IN APPROPRIATIONS

We obtained information on total appropriations to DOD for fiscal years 1957 through 1980 from the Office of the Secretary of Defense. This information was summarized both in current dollars and in constant dollars. The constant dollar figures were computed by DOD. We tested the bases for DOD's computations and believe them to be acceptable.

Appropriations in current dollars

DOD received \$35.9 billion in appropriations for fiscal year 1957 and \$135 billion for fiscal year 1980, an increase of 276 percent. Changes in appropriations in current dollars for the military services for fiscal years 1957 and 1980 as reported by DOD are summarized in the following table and shown graphically in enclosure V.

<u>Military service</u>	<u>Amount in 1957</u>	<u>Amount in 1980</u>	<u>Increase</u>	<u>Percent of increase</u>
	------(billion)-----			
Army	\$ 7.577	\$33.820	\$26.243	346.4
Navy/Marine Corps	10.106	43.952	33.846	334.9
Air Force	17.567	38.879	21.312	121.3

Appropriations in constant dollars

In terms of constant dollars, DOD received \$122.5 billion in fiscal year 1957 and \$135 billion in fiscal year 1980, an increase of 10.2 percent. Changes in appropriations in constant dollars for the military services, using fiscal year 1980 as the base year, are summarized in the following table and shown graphically in enclosure VI.

<u>Military service</u>	<u>Amount in 1957</u>	<u>Amount in 1980</u>	<u>Increase or decrease (-)</u>	<u>Percent of increase or decrease (-)</u>
----- (billions) -----				
Army	\$28.513	\$33.820	\$ 5.307	18.6
Navy/Marine Corps	36.997	43.952	6.955	18.8
Air Force	54.776	38.879	-15.897	-29.0

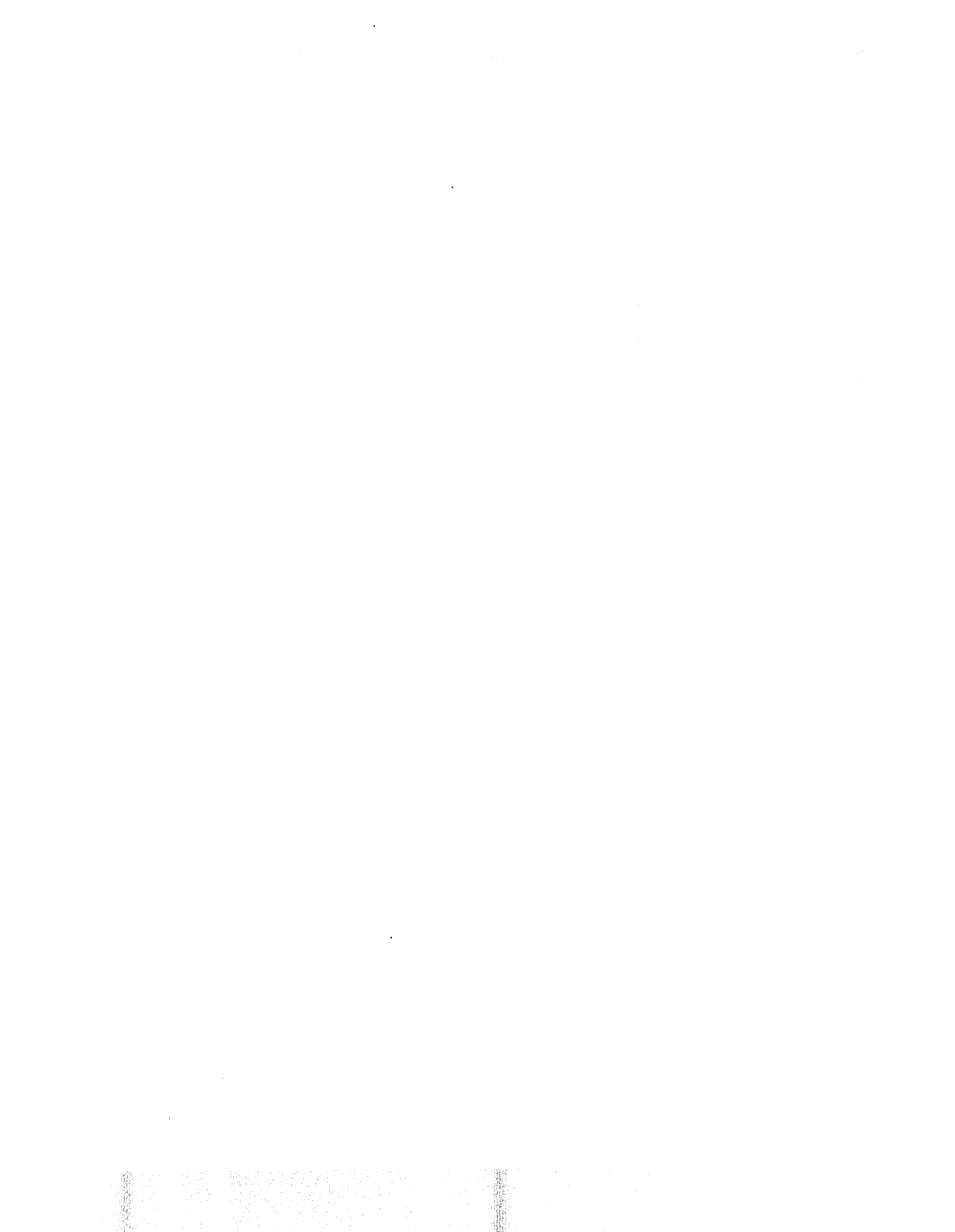
As you requested we did not obtain comments on this report from DOD. Unless you publicly announce its contents earlier, we will make no further distribution of this report until 30 days from the date of the report. At that time, we will send copies to the Director of the Office of Management and Budget, the Secretary of Defense, and other parties upon request.

Sincerely yours,

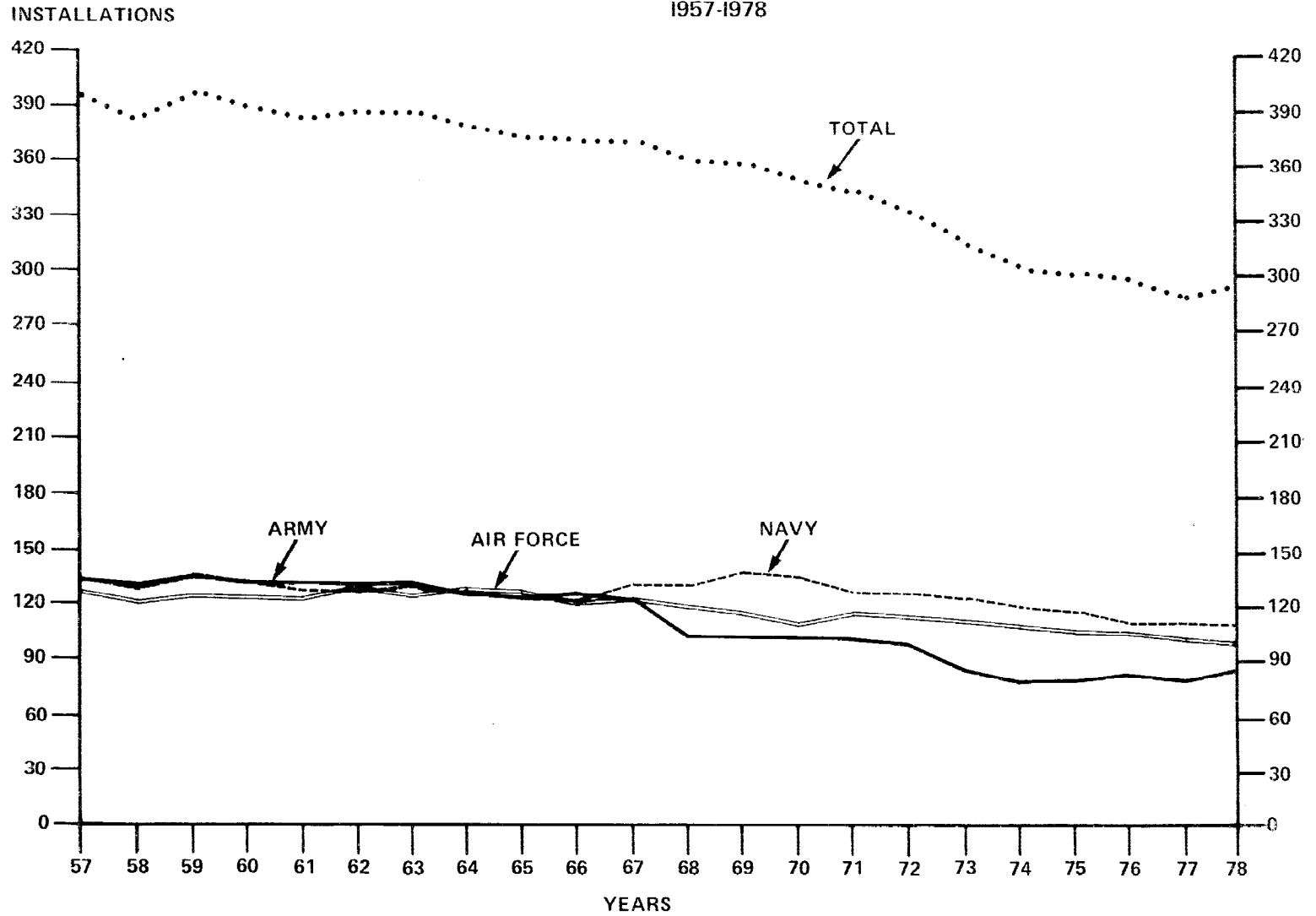


R. W. Gutmann
Director

Enclosures - 6



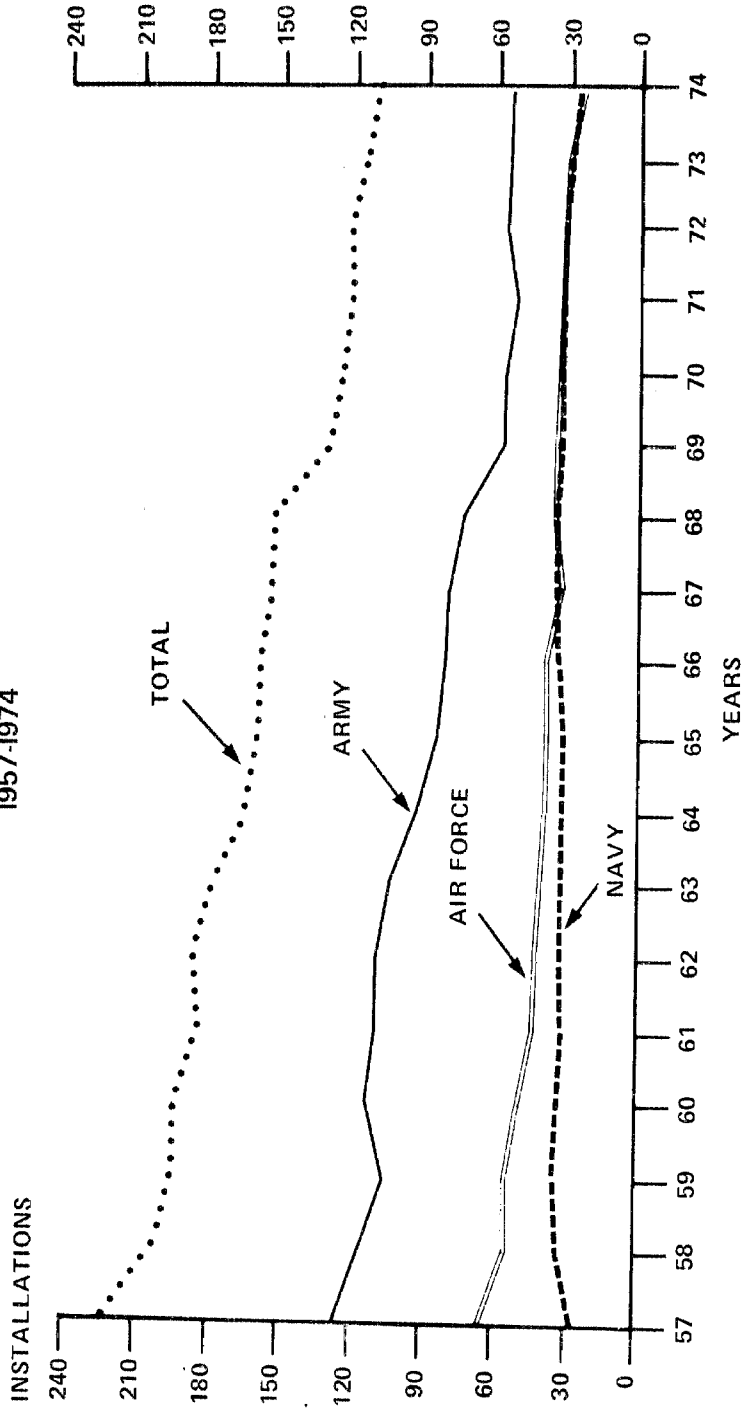
TOTAL MAJOR MILITARY INSTALLATIONS
IN THE CONTINENTAL UNITED STATES
1957-1978



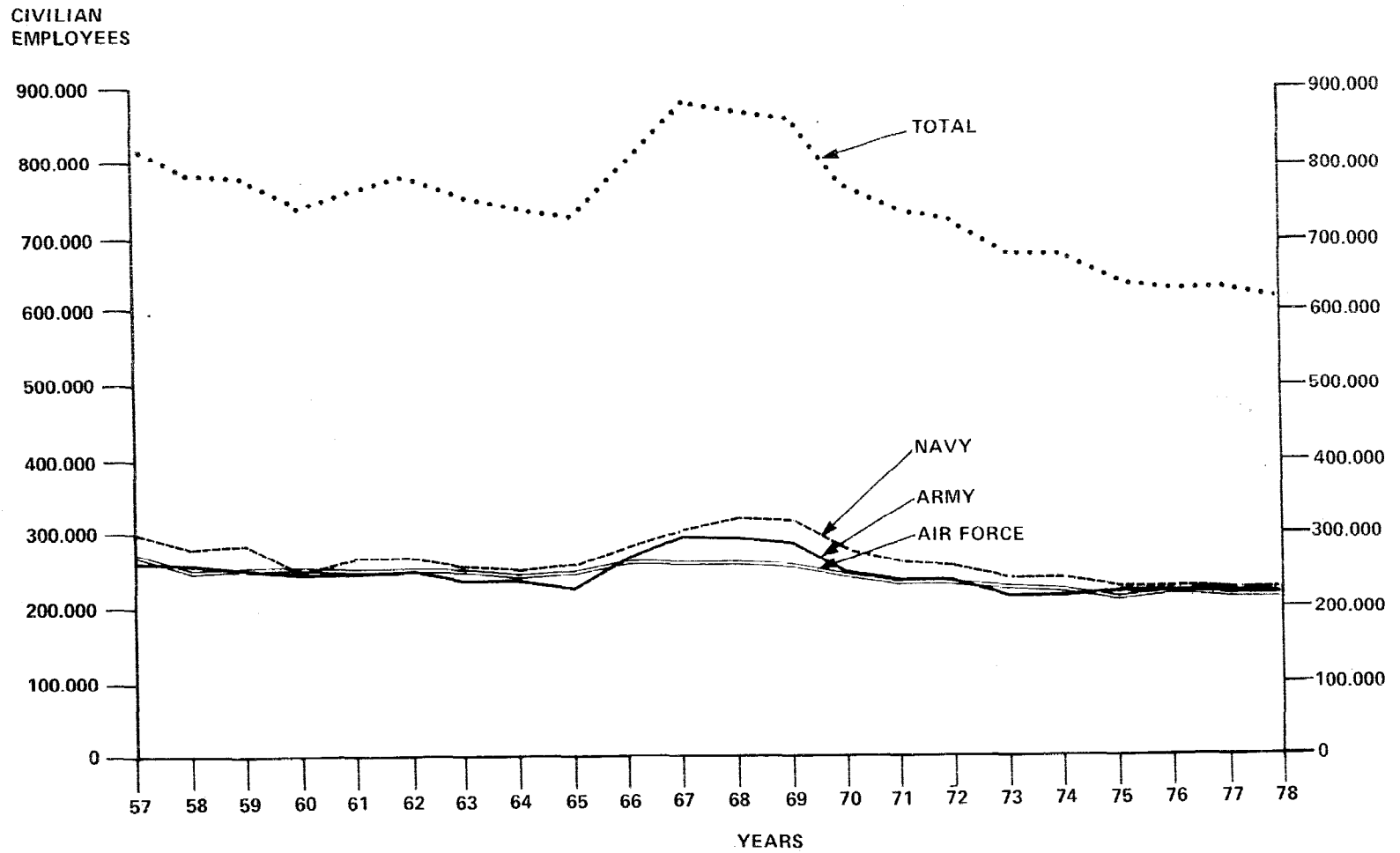
ENCLOSURE I

ENCLOSURE I

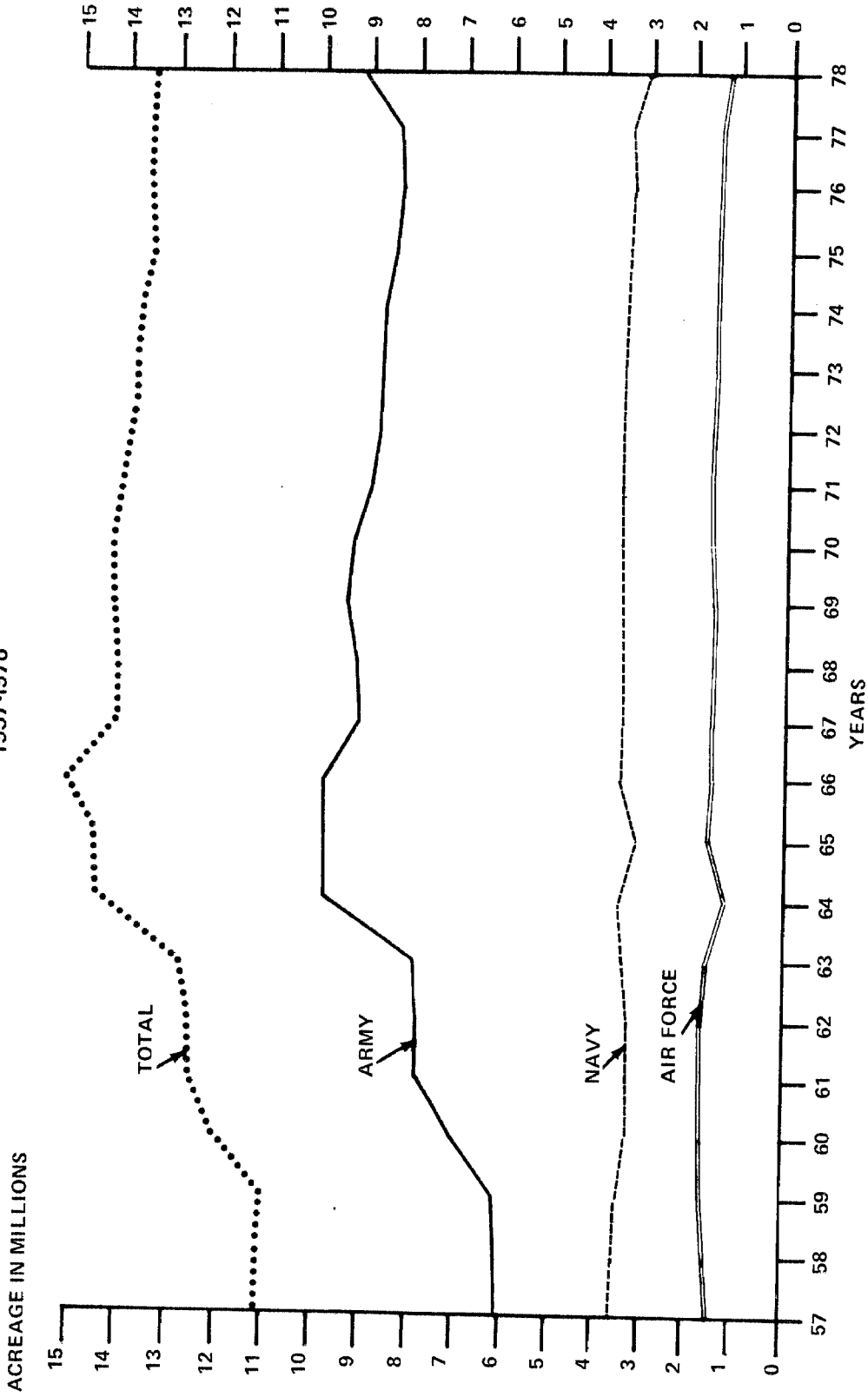
TOTAL MAJOR MILITARY INSTALLATIONS IN
UNITED STATES TERRITORIES AND FOREIGN COUNTRIES
1957-1974



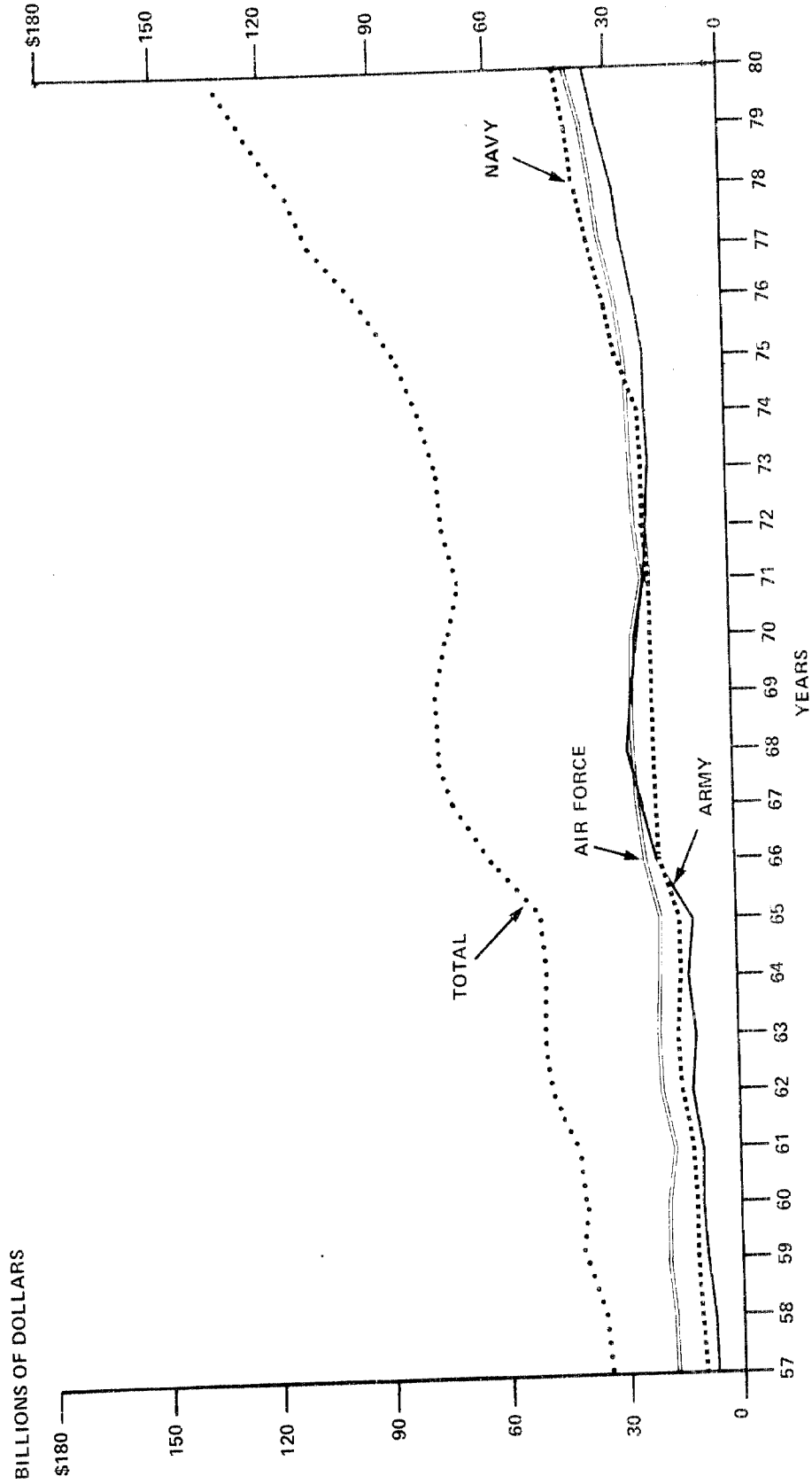
TOTAL NUMBER OF CIVILIAN EMPLOYEES AT MAJOR
MILITARY INSTALLATIONS IN THE CONTINENTAL UNITED STATES
1957-1978



TOTAL ACREAGE OF MAJOR MILITARY INSTALLATIONS
IN THE CONTINENTAL UNITED STATES
1957-1978

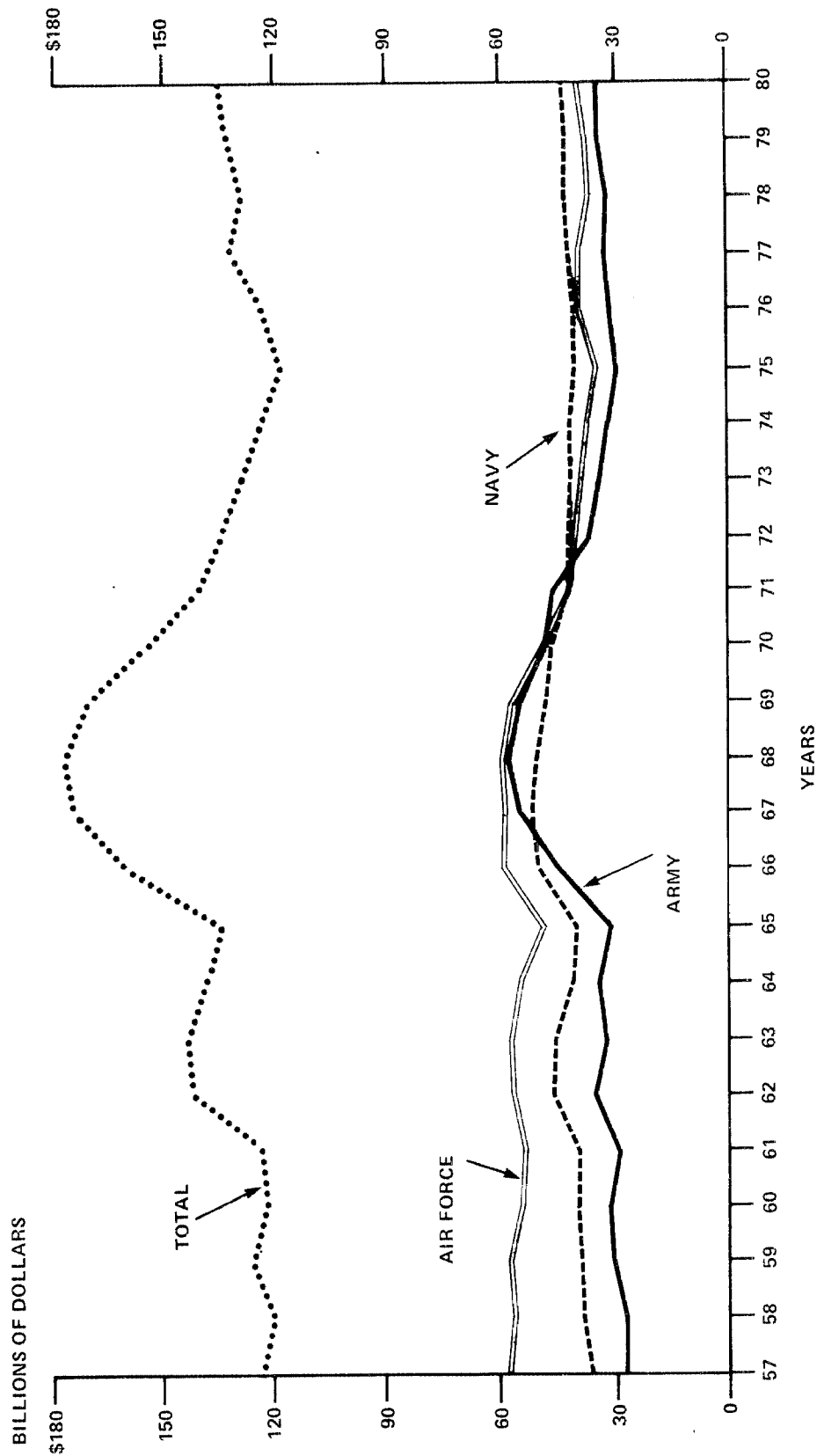


DEPARTMENT OF DEFENSE
APPROPRIATIONS FOR FY 1957-1980
IN CURRENT DOLLARS



SOURCE: DEPARTMENT OF DEFENSE

DEPARTMENT OF DEFENSE
APPROPRIATIONS FOR FY 1957-1980
IN CONSTANT DOLLARS



SOURCE: DEPARTMENT OF DEFENSE